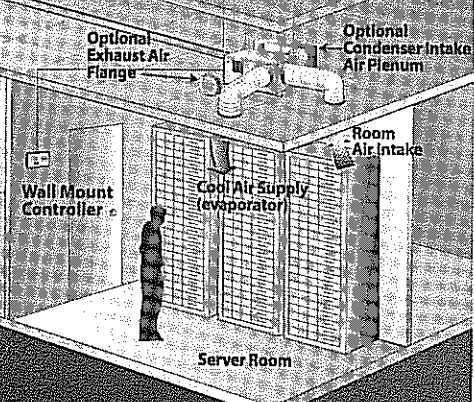
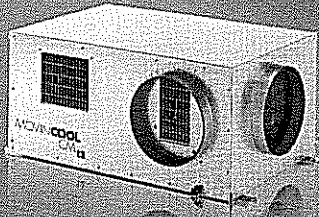


THIS IDEA WAS SO
COOL...

**THE INDUSTRY'S
BEST SELLING
CEILING-MOUNT
SPOT COOLING
SYSTEM**



- 10,500 Btu/h of cooling
- Quick & easy installation
- No special electric required
- Fits into tight ceiling spaces
- No floor space needed

To learn more visit movincool.com
or call 800-264-9573

MOVINCOOL
THE #1 SPOT COOLING SOLUTION

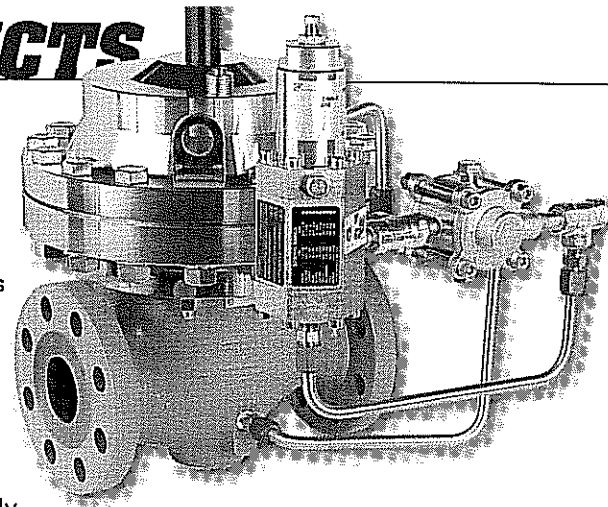
© 2010 DENSO Sales California, Inc. MovinCool, SpotCool and Office Pro are registered trademarks of DENSO Corporation.

Indicate 140 on inquiry card

NEW PRODUCTS

Whisper Quiet

Emerson Process Management (Austin, TX) announces the release of the Fisher® EZHSO Series Regulator as well as WhisperTrim® Cage options to ensure gas delivery with fail-open alternative and more efficient noise abatement. The Type EZHSO and EZHSO-OSX (slam-shut) regulators are available in 1", 2", and 3" sizes. Benefits include:



- True no-bleed design: Environmentally friendly design eliminates emissions for higher pressure pipelines.
- True top-entry maintenance: Reduces time and expense for training, installation, and maintenance.
- Bubble-tight shutoff: Reduces cost of ownership by precisely regulating high-pressure transmission lines, providing consistent reliability of gas delivery and shutoff.
- 1,500 psig (103 bar) inlet/outlet rating: Meets higher system requirements.

Indicate 141 on inquiry card



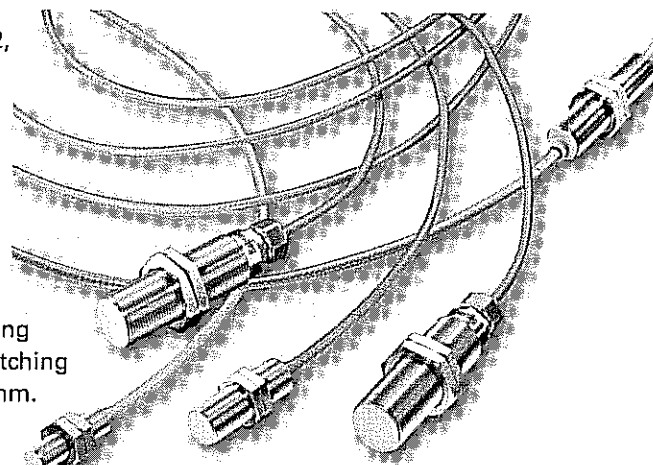
Make Your Mark

Gasoil Chemicals, a specialty chemical division of Federal Process Corporation (Cleveland, OH) has released a new line of FAS-MARK Cap and Cover Paint, an acrylic, upside-down spray paint. The specially-designed cap enables fast, upside-down application with little or no over spray, and the paint can be applied directly to metal and other clean, dry surfaces. The quick-dry formula in FAS-MARK dries within eight to ten minutes, and the paint is UV-resistant and water-repellant. In addition, the formula is VOC-compliant.

Indicate 142 on inquiry card

Sensor Family

For sensing applications exposed to temperatures from -25 to 180 degrees C, Baumer (Southington, CT) has introduced the new IFRH Series of Inductive High Temperature Sensors, a family of two-part proximity switches available in M8, M12, and M18 designs with chromium nickel steel housings. Intended for flush-face installation, the IP67-rated IFRH sensors are designed to detect the presence of metal targets. With an overall length of just 30 mm, the M8 sensor is specifically designed for use in limited-space applications. Depending upon the housing size, nominal switching distance ranges from 1.5 mm to 5 mm.



Indicate 143 on inquiry card